



Simply EASY!

PRESSURE SENSITIVE LABEL APPLICATOR

*SynerG XP series*

XP100 - WRAP



The SynerG XP100-Wrap is a high-end, servo-driven labeling system. It provides maintenance-free, wraparound operation for clear and opaque pressure sensitive labels. SIMPLY EASY to use, the SynerG XP100-Wrap exemplifies efficiency and accuracy. Setup recipes are given names and recalled from the operator touch screen. Variables such as operating speeds, label length and container length parameters are synchronized and automatically adjusted.

### CONSTRUCTION

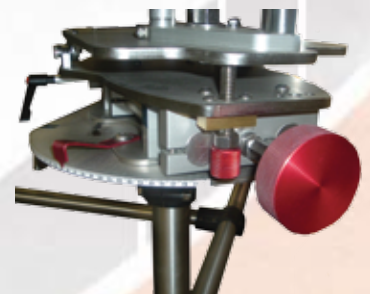
- Servo-motor labeler
- No proprietary electronics or microprocessors – components available worldwide
- Robust, stainless steel & high grade anodized aluminum construction
- Precision gradient scales with letters on all adjustments, cleanly displayed in setup recipes
- User friendly color-evident anodized adjustments
- Tool-less changeovers
- Conveyor with side guides: 4" wide x 120" long x 38" high. Height adjustability of +/- 1"
- Servo-driven wrap station
- Labeling head adjustments include: Angle, tilt, pitch and roll

### CONTROL

- Programmable servo-controller (open architecture internal network)
- Standard 5.7" touch screen interface on electrical panel
- On-screen diagnostics and speed controls
- Automatic missing label compensation/label length detection
- True scalable setting memorization for 50 set-up recipes
- Complete encoded synchronization
- Production quantity counter alert
- Digitally controlled gap and product sensors – never physically move the sensors again

### PERFORMANCE

- Single belt drive technology for fast and accurate ramp up and ramp down
- Synchronized speeds up to 1570"/min (40 meters/min)
- Adjustable spacing wheel
- One-touch position calibration (label position on peel plate's edge)
- Precision label dispensing of +/- 1/16"
- Longer wrap area for labels up to 18 inches ( container dia. 1"– 6")



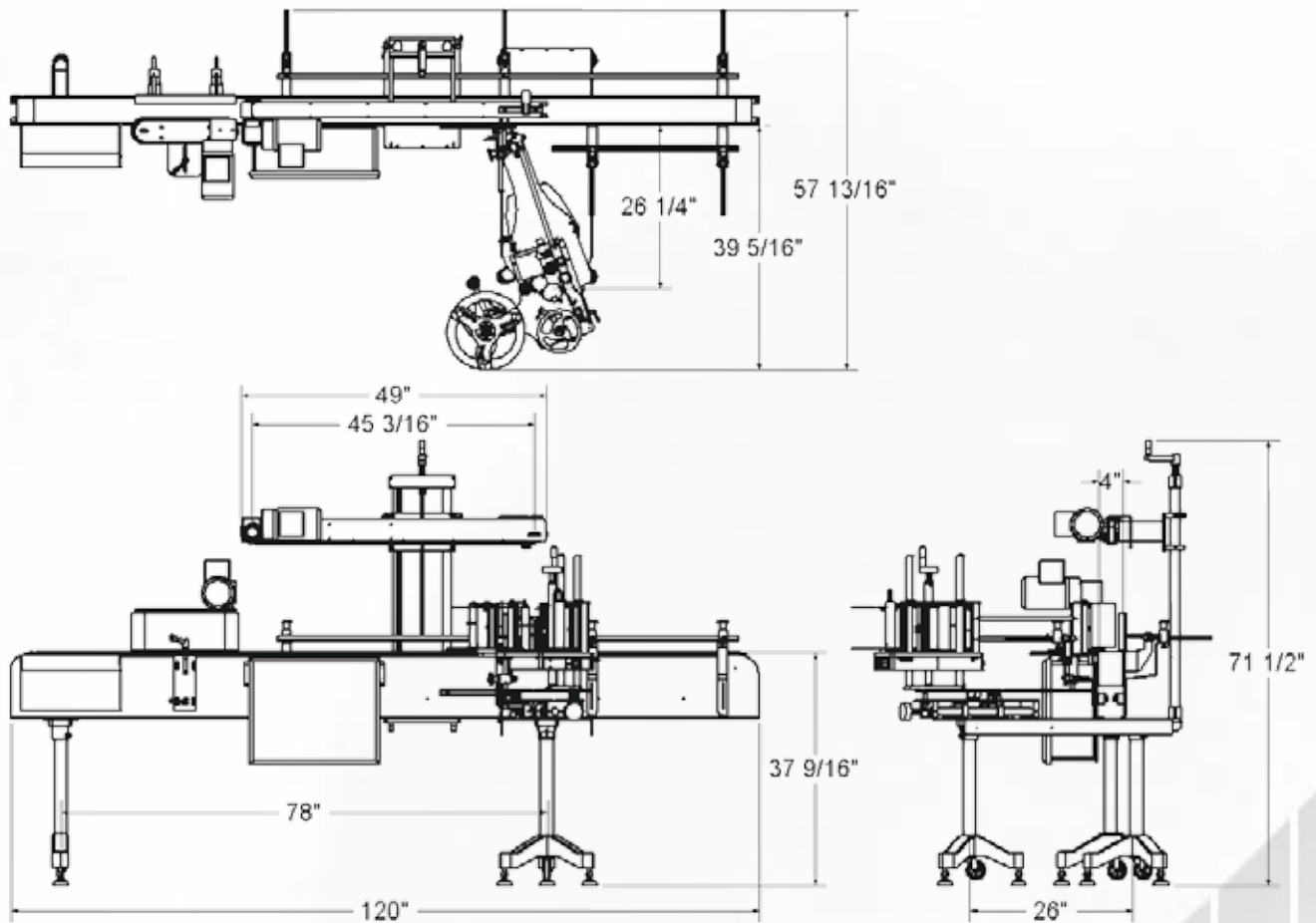
Traditional Wrap



Long belt wrap



## SynerG XP Series XP100T Wrap Labeler - Specifications



Power:	200-240 VAC, single phase, 60 Hz, 10 amps
Labeling rate:	Synchronized 1570"/min (40 meters/min)
Accuracy:	+/- 1/16"
Min. label:	1/2" wide x 1/2" long
Max. label:	6" wide x 18" long
Media roll size:	12" (305mm) OD on 3" (76mm) CORE
Motor:	(Encoded) synchronized SERVO
Controller:	Touch screen HMI
Weight:	350 Lbs.
Label detection:	Photoeye (fixed)
Available options:	Status lamp tower with alarm Wide web width up to 9" (229mm) Clear label sensor Side transfer bracketing Various back plate sizes Thermal inkjet coder



Distributed by:

