



Simply EASY!

PRESSURE SENSITIVE LABEL APPLICATOR

SynerG XP series

XP200T PAIL - FRONT/BACK



The SynerG XP200T Front/Back Pail Labeler is a high-end servo-driven labeling system providing maintenance-free operation for tapered and straight-sided pails. Labels can be applied on two sides of pails ranging in size from 1/2 gallon to 6 gallons. Extremely easy to use, the labeler provides both reliability and accuracy. Setup recipes are given names and recalled from the operator touch screen. Variables such as speeds, label lengths and container lengths are automatically adjusted without moving sensors. Pail handles are controlled during the labeling process. Square and rectangular pails can also be labeled.

CONSTRUCTION

- **Servo**-motor labelers
- No proprietary electronics or microprocessors – components available worldwide
- **Servo**-motors on all motorized assemblies
- Robust stainless steel & high grade anodized aluminum construction
- Precision gradient scales on all adjustments: displayed in setup recipes
- User friendly color-evident anodized adjustments
- Tool-less changeovers
- Conveyor with side guides: 12" wide x 96" long x 38" high. Height adjustability of +/- 1"
- Top hold down module, digitally synchronized to conveyor
- Handle guiding mechanism



CONTROL

- Programmable **servo**-controller (open architecture internal network)
- Standard 5.7" touch screen interface on pole mount
- On-screen diagnostics and speed controls
- Automatic missing label compensation/label length detection
- True scalable setting memorization for 50 set-up recipes
- Complete encoded synchronization
- Status lamp tower with alarm
- Production quantity counter alert
- Digitally controlled gap and product sensors –never physically move the sensors again



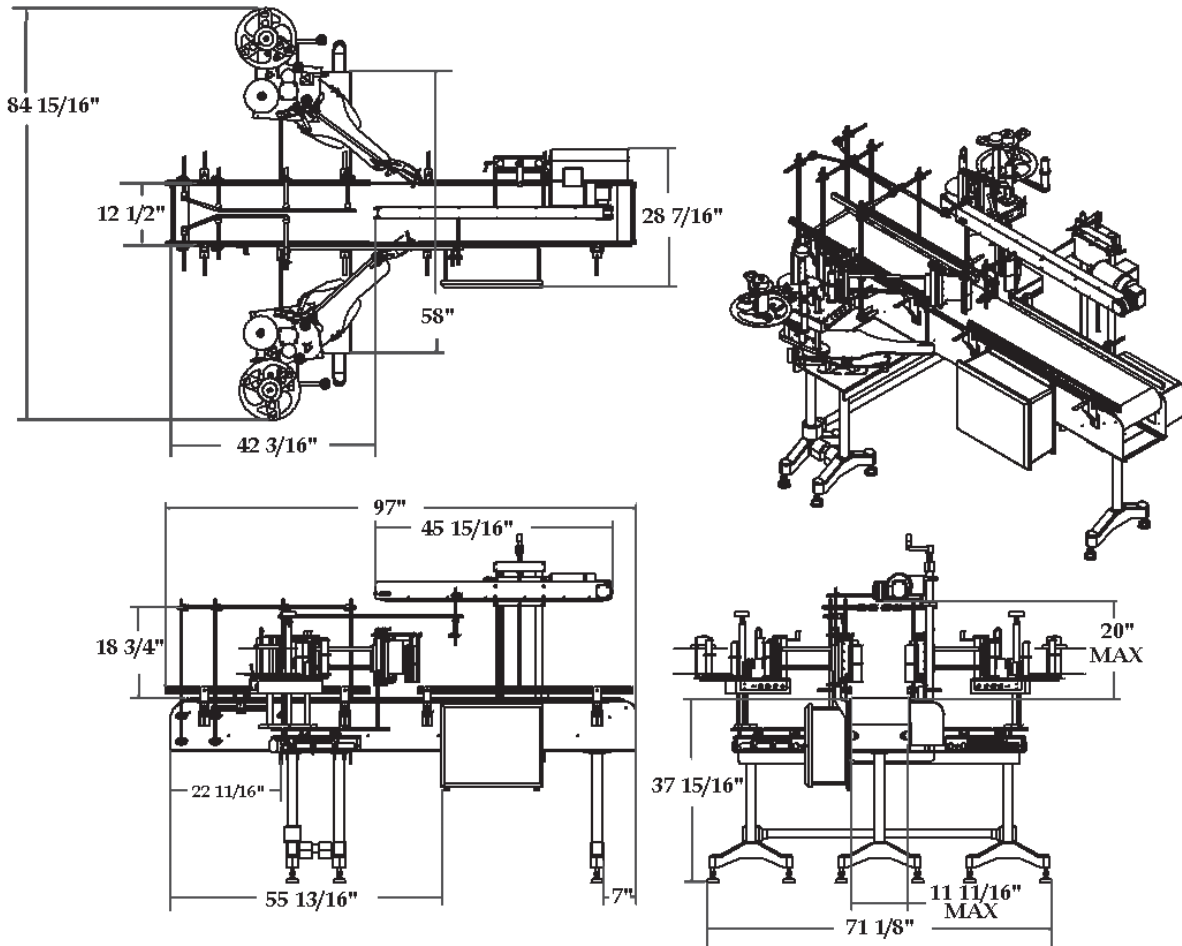
PERFORMANCE

- Single belt drive technology for fast and accurate ramp up and ramp down
- Synchronized speeds up to 1570"/min (40 meters/min)
- Precision label dispensing of +/- 1/16"
- Label position on product using the touch screen (extreme precision)
- Optional wipe gates (vacuum or standard)

NITA - LABELING EQUIPMENT WWW.NITALABELINGEQUIPMENT.COM
1051 DU VIGER STREET, TERREBONNE (QC), CANADA, J6W 6B6, 1.877.961.4008



SynerG XP Series - XP200T Pail Labeler - Specifications



Power:	200-240 VAC, single phase, 60 Hz, 10 amps
Labeling rate:	Synchronized 1570"/min (40 meters/min)
Accuracy:	+/- 1/16"
Min. label:	1/2" wide x 1/2" long
Max. label:	6" wide x 34" long
Media roll size:	12" (305mm) OD on 3" (76mm) CORE
Motor:	(Encoded) synchronized SERVO
Controller:	Touch screen HMI
Weight:	350 Lbs.
Label detection:	(fixed) Photoelectric
Available options:	Spacing wheel Wide web width up to 9" (229 mm) Clear label sensor Entrance conveyor with handle guiding system Cylinder closing module Wipe gates (pneumatic & traditional) Spider back-closing system Pneumatic closure system



Distributed by:

